



HUGHES-KAY COMPANY, INC.
 6504 EAST CURET STREET
 DOUGLASVILLE, GEORGIA 30135
 770.942.0152
 www.HughesKay.com
 HES-02-10-000-0000

PROVISIONS
 1. DESIGN SHALL BE IN ACCORDANCE WITH THE LATEST EDITIONS OF THE STANDARD SPECIFICATIONS FOR CONSTRUCTION OF PUBLIC WORKS, AS APPLICABLE.
 2. THE CONTRACTOR SHALL BE RESPONSIBLE FOR OBTAINING ALL NECESSARY PERMITS FROM THE APPROPRIATE AGENCIES.
 3. THE CONTRACTOR SHALL MAINTAIN ACCESS TO ALL ADJACENT PROPERTIES AND UTILITIES AT ALL TIMES.
 4. THE CONTRACTOR SHALL MAINTAIN ALL EXISTING UTILITIES UNLESS OTHERWISE NOTED.
 5. THE CONTRACTOR SHALL MAINTAIN ALL EXISTING EROSION CONTROL MEASURES UNLESS OTHERWISE NOTED.

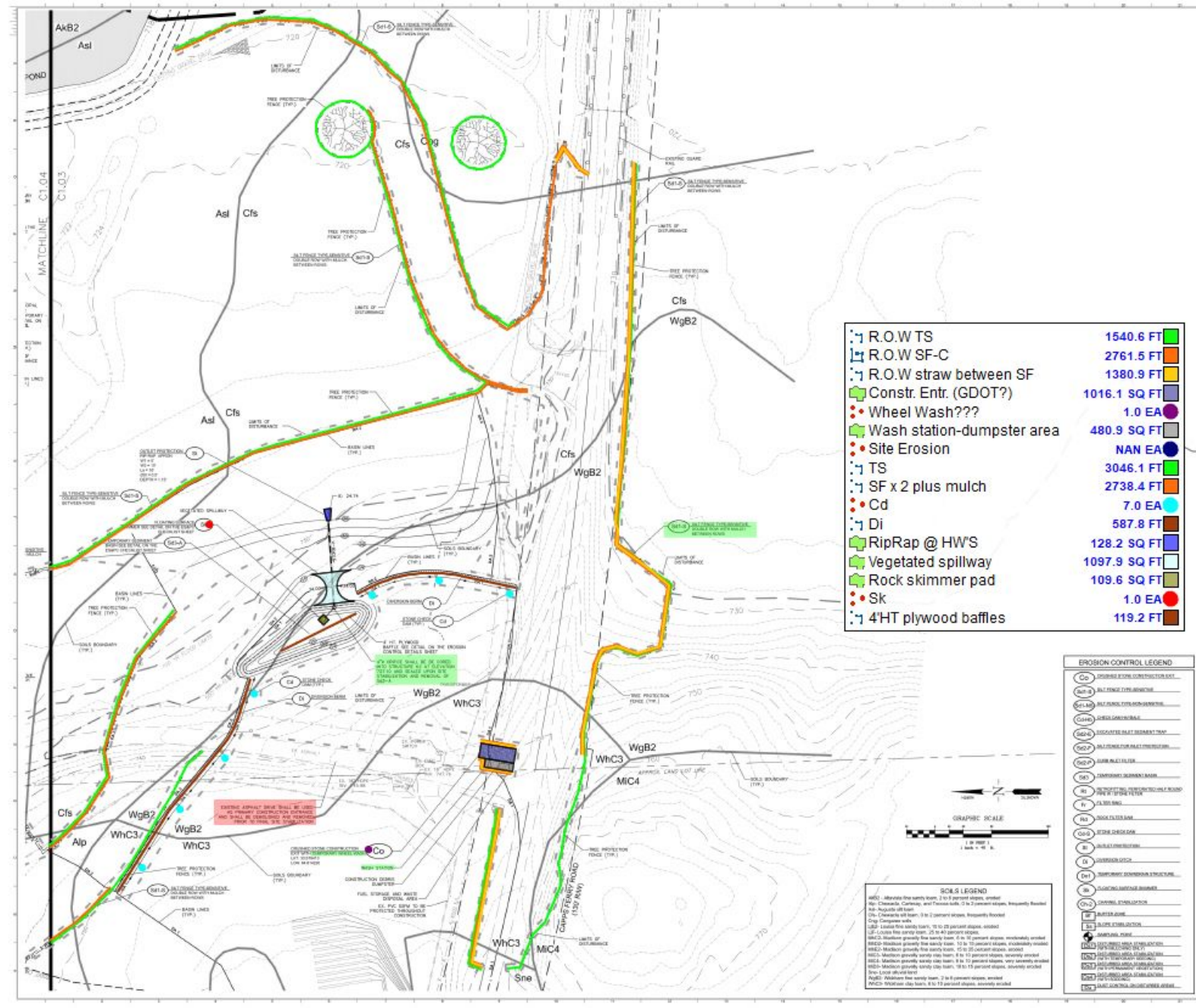
NO.	DESCRIPTION	DATE
1	DESIGN DEVELOPMENT	08/18/24
2	DESIGN DEVELOPMENT	09/10/24
3	DESIGN DEVELOPMENT	11/11/24
4	DESIGN DEVELOPMENT	11/11/24
5	DESIGN DEVELOPMENT	11/11/24

OWNER:
 FOXHALL WESTIN RESORT AND SPORTING CLUB
 800 CARRS FERRY RD
 DOUGLASVILLE, GA 30135
 770.942.0152

DEVELOPER:
 FOXHALL

24 HR CONTACT:
 770.942.0152

Contract # 2024000000



1	R.O.W TS	1540.6 FT
2	R.O.W SF-C	2761.5 FT
3	R.O.W straw between SF	1380.9 FT
4	Constr. Entr. (GDOT?)	1016.1 SQ FT
5	Wheel Wash???	1.0 EA
6	Wash station-dumpster area	480.9 SQ FT
7	Site Erosion	NAN EA
8	TS	3046.1 FT
9	SF x 2 plus mulch	2738.4 FT
10	Cd	7.0 EA
11	Di	587.8 FT
12	RipRap @ HWS	128.2 SQ FT
13	Vegetated spillway	1097.9 SQ FT
14	Rock skimmer pad	109.6 SQ FT
15	Sk	1.0 EA
16	4HT plywood baffles	119.2 FT

EROSION CONTROL LEGEND

(Co)	CONCRETE CURB
(Cf)	CONCRETE CURB
(Cg)	CONCRETE CURB
(Ch)	CONCRETE CURB
(Ci)	CONCRETE CURB
(Cj)	CONCRETE CURB
(Ck)	CONCRETE CURB
(Cl)	CONCRETE CURB
(Cm)	CONCRETE CURB
(Cn)	CONCRETE CURB
(Co)	CONCRETE CURB
(Cp)	CONCRETE CURB
(Cq)	CONCRETE CURB
(Cr)	CONCRETE CURB
(Cs)	CONCRETE CURB
(Ct)	CONCRETE CURB
(Cu)	CONCRETE CURB
(Cv)	CONCRETE CURB
(Cw)	CONCRETE CURB
(Cx)	CONCRETE CURB
(Cy)	CONCRETE CURB
(Cz)	CONCRETE CURB
(D)	DIAPHRAGM WALL
(E)	EMBANKMENT
(F)	EXPOSED SOIL
(G)	EXPOSED SOIL
(H)	EXPOSED SOIL
(I)	EXPOSED SOIL
(J)	EXPOSED SOIL
(K)	EXPOSED SOIL
(L)	EXPOSED SOIL
(M)	EXPOSED SOIL
(N)	EXPOSED SOIL
(O)	EXPOSED SOIL
(P)	EXPOSED SOIL
(Q)	EXPOSED SOIL
(R)	EXPOSED SOIL
(S)	EXPOSED SOIL
(T)	EXPOSED SOIL
(U)	EXPOSED SOIL
(V)	EXPOSED SOIL
(W)	EXPOSED SOIL
(X)	EXPOSED SOIL
(Y)	EXPOSED SOIL
(Z)	EXPOSED SOIL



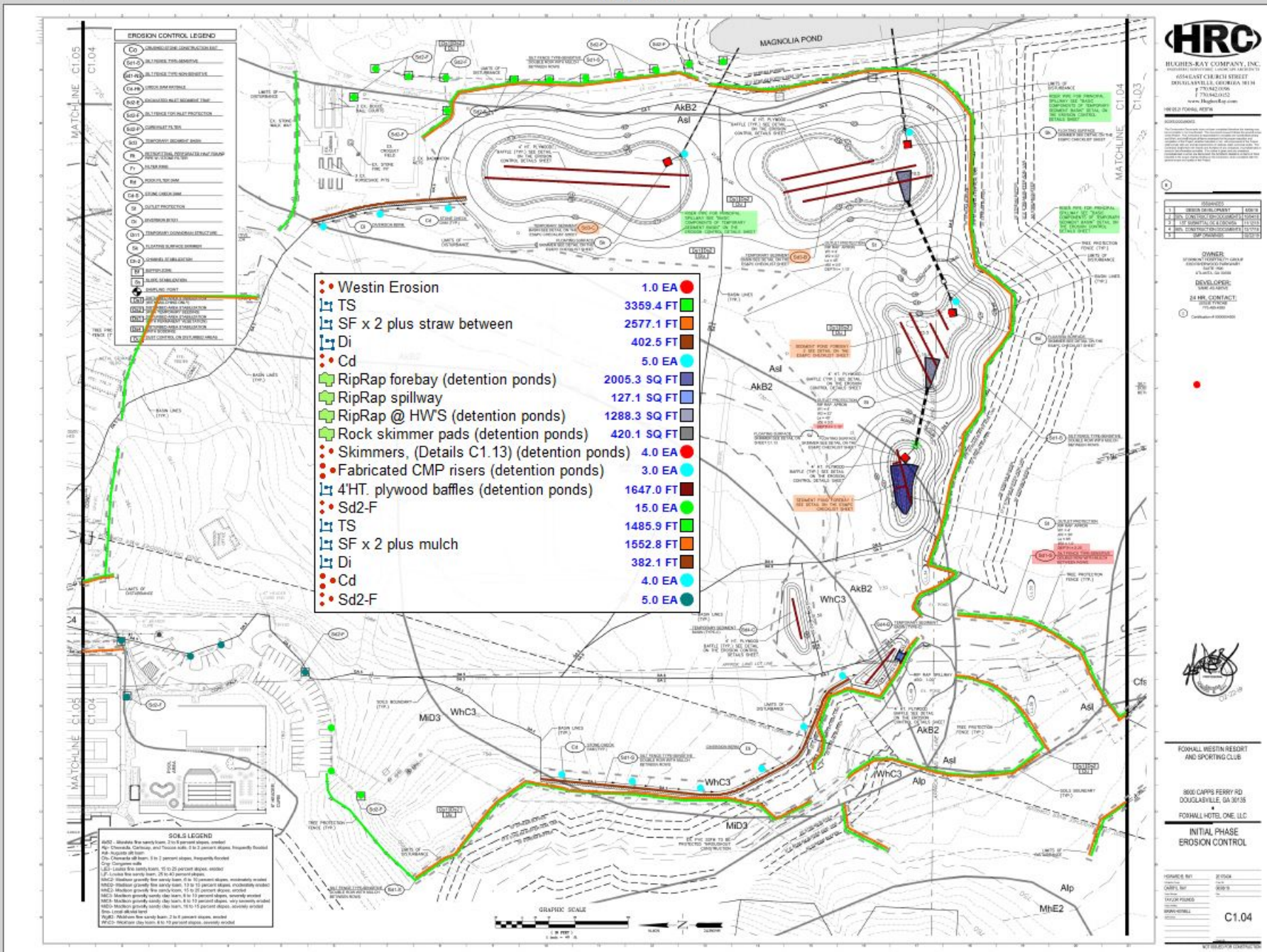
SOILS LEGEND

MSU - Moderate fine sandy loam, 2 to 8 percent slopes, eroded
 Ap - Cherty, clayey, and thin bedded, 0 to 2 percent slopes, frequently flooded
 Cg - Clayey, silty, 10 to 20 percent slopes, eroded
 Ck - Clayey, silty, 10 to 20 percent slopes, eroded
 Cl - Clayey, silty, 10 to 20 percent slopes, eroded
 Cm - Clayey, silty, 10 to 20 percent slopes, eroded
 Cn - Clayey, silty, 10 to 20 percent slopes, eroded
 Cp - Clayey, silty, 10 to 20 percent slopes, eroded
 Cq - Clayey, silty, 10 to 20 percent slopes, eroded
 Cr - Clayey, silty, 10 to 20 percent slopes, eroded
 Cs - Clayey, silty, 10 to 20 percent slopes, eroded
 Ct - Clayey, silty, 10 to 20 percent slopes, eroded
 Cu - Clayey, silty, 10 to 20 percent slopes, eroded
 Cv - Clayey, silty, 10 to 20 percent slopes, eroded
 Cw - Clayey, silty, 10 to 20 percent slopes, eroded
 Cx - Clayey, silty, 10 to 20 percent slopes, eroded
 Cy - Clayey, silty, 10 to 20 percent slopes, eroded
 Cz - Clayey, silty, 10 to 20 percent slopes, eroded
 D - Moderate fine sandy loam, 2 to 8 percent slopes, eroded
 E - Moderate fine sandy loam, 2 to 8 percent slopes, eroded
 F - Moderate fine sandy loam, 2 to 8 percent slopes, eroded
 G - Moderate fine sandy loam, 2 to 8 percent slopes, eroded
 H - Moderate fine sandy loam, 2 to 8 percent slopes, eroded
 I - Moderate fine sandy loam, 2 to 8 percent slopes, eroded
 J - Moderate fine sandy loam, 2 to 8 percent slopes, eroded
 K - Moderate fine sandy loam, 2 to 8 percent slopes, eroded
 L - Moderate fine sandy loam, 2 to 8 percent slopes, eroded
 M - Moderate fine sandy loam, 2 to 8 percent slopes, eroded
 N - Moderate fine sandy loam, 2 to 8 percent slopes, eroded
 O - Moderate fine sandy loam, 2 to 8 percent slopes, eroded
 P - Moderate fine sandy loam, 2 to 8 percent slopes, eroded
 Q - Moderate fine sandy loam, 2 to 8 percent slopes, eroded
 R - Moderate fine sandy loam, 2 to 8 percent slopes, eroded
 S - Moderate fine sandy loam, 2 to 8 percent slopes, eroded
 T - Moderate fine sandy loam, 2 to 8 percent slopes, eroded
 U - Moderate fine sandy loam, 2 to 8 percent slopes, eroded
 V - Moderate fine sandy loam, 2 to 8 percent slopes, eroded
 W - Moderate fine sandy loam, 2 to 8 percent slopes, eroded
 X - Moderate fine sandy loam, 2 to 8 percent slopes, eroded
 Y - Moderate fine sandy loam, 2 to 8 percent slopes, eroded
 Z - Moderate fine sandy loam, 2 to 8 percent slopes, eroded



FOXHALL WESTIN RESORT AND SPORTING CLUB
 800 CARRS FERRY RD
 DOUGLASVILLE, GA 30135
 FOXHALL HOTEL, ONE, LLC

INITIAL PHASE EROSION CONTROL
 DRAWN BY: J. SMITH
 CHECKED BY: J. SMITH
 DATE: 08/18/24
 SCALE: AS SHOWN
 SHEET: C1.03



EROSION CONTROL LEGEND

Co	CONCRETE CURB
SetD	SETBACK DISTANCE
41-H	41-HR. EROSION CONTROL
41-HB	41-HR. BARRIERS
41-HC	41-HR. CURBS
41-HD	41-HR. DITCHES
41-HE	41-HR. EROSION CONTROL
41-HF	41-HR. FENCES
41-HG	41-HR. GARDENS
41-HH	41-HR. HEDGES
41-HI	41-HR. IRRIGATION
41-HJ	41-HR. JETTING
41-HK	41-HR. KILLS
41-HL	41-HR. LANDSCAPING
41-HM	41-HR. MAINTENANCE
41-HN	41-HR. NURSERY
41-HO	41-HR. OIL
41-HP	41-HR. PAVING
41-HQ	41-HR. QUARRY
41-HR	41-HR. REPAIRS
41-HS	41-HR. SIGNAGE
41-HT	41-HR. TRENCHES
41-HU	41-HR. UTILITIES
41-HV	41-HR. VENTILATION
41-HW	41-HR. WALLS
41-HX	41-HR. WINDOWS
41-HY	41-HR. YARDWORK
41-HZ	41-HR. ZONING

•	Westin Erosion	1.0 EA	●
TS	TS	3359.4 FT	■
SF x 2 plus straw between	SF x 2 plus straw between	2577.1 FT	■
Di	Di	402.5 FT	■
Cd	Cd	5.0 EA	●
RipRap forebay (detention ponds)	RipRap forebay (detention ponds)	2005.3 SQ FT	■
RipRap spillway	RipRap spillway	127.1 SQ FT	■
RipRap @ HW'S (detention ponds)	RipRap @ HW'S (detention ponds)	1288.3 SQ FT	■
Rock skimmer pads (detention ponds)	Rock skimmer pads (detention ponds)	420.1 SQ FT	■
Skimmers, (Details C1.13) (detention ponds)	Skimmers, (Details C1.13) (detention ponds)	4.0 EA	●
Fabricated CMP risers (detention ponds)	Fabricated CMP risers (detention ponds)	3.0 EA	●
4'HT. plywood baffles (detention ponds)	4'HT. plywood baffles (detention ponds)	1647.0 FT	■
Sd2-F	Sd2-F	15.0 EA	●
TS	TS	1485.9 FT	■
SF x 2 plus mulch	SF x 2 plus mulch	1552.8 FT	■
Di	Di	382.1 FT	■
Cd	Cd	4.0 EA	●
Sd2-F	Sd2-F	5.0 EA	●

SOILS LEGEND

MC1	Medium clay loam, 2 to 8 percent slopes, severely eroded
MC2	Medium clay loam, 2 to 8 percent slopes, frequently flooded
MC3	Medium clay loam, 2 to 8 percent slopes, frequently flooded
MC4	Medium clay loam, 2 to 8 percent slopes, frequently flooded
MC5	Medium clay loam, 2 to 8 percent slopes, frequently flooded
MC6	Medium clay loam, 2 to 8 percent slopes, frequently flooded
MC7	Medium clay loam, 2 to 8 percent slopes, frequently flooded
MC8	Medium clay loam, 2 to 8 percent slopes, frequently flooded
MC9	Medium clay loam, 2 to 8 percent slopes, frequently flooded
MC10	Medium clay loam, 2 to 8 percent slopes, frequently flooded
MC11	Medium clay loam, 2 to 8 percent slopes, frequently flooded
MC12	Medium clay loam, 2 to 8 percent slopes, frequently flooded
MC13	Medium clay loam, 2 to 8 percent slopes, frequently flooded
MC14	Medium clay loam, 2 to 8 percent slopes, frequently flooded
MC15	Medium clay loam, 2 to 8 percent slopes, frequently flooded
MC16	Medium clay loam, 2 to 8 percent slopes, frequently flooded
MC17	Medium clay loam, 2 to 8 percent slopes, frequently flooded
MC18	Medium clay loam, 2 to 8 percent slopes, frequently flooded
MC19	Medium clay loam, 2 to 8 percent slopes, frequently flooded
MC20	Medium clay loam, 2 to 8 percent slopes, frequently flooded



HUGHES-KAY COMPANY, INC.
 600 EAST COLUMBIA STREET
 DUBLIN, GEORGIA 31033
 770-421-1000
 www.HughesKay.com

PROJECT INFORMATION

1	DESIGN DEVELOPMENT	2018
2	PERMITTING	2018
3	CONSTRUCTION	2018
4	OPERATION	2018

OWNER
 FOXHALL WESTIN RESORT AND SPORTING CLUB
 800 CARRS FERRY RD
 DOUGLASVILLE, GA 30135

DEVELOPER
 FOXHALL HOTEL, ONE, LLC

24 HR. CONTACT:
 770-421-1000

PROJECT TITLE
 INITIAL PHASE
 EROSION CONTROL

DATE
 11/15/2018

SCALE
 1" = 40'

PROJECT NO.
 18-000000

PROJECT LOCATION
 FOXHALL WESTIN RESORT AND SPORTING CLUB
 800 CARRS FERRY RD
 DOUGLASVILLE, GA 30135

PROJECT DESCRIPTION
 INITIAL PHASE
 EROSION CONTROL

PROJECT STATUS
 IN PROGRESS

PROJECT CONTACT
 FOXHALL HOTEL, ONE, LLC

PROJECT LOCATION
 FOXHALL WESTIN RESORT AND SPORTING CLUB
 800 CARRS FERRY RD
 DOUGLASVILLE, GA 30135

PROJECT TITLE
 INITIAL PHASE
 EROSION CONTROL

DATE
 11/15/2018

SCALE
 1" = 40'

